



EXTEND YOUR ABILITIES BEYOND ALL LIMITS

VETERINARY DENTISTRY PRODUCTS





# For a 32 tooth smile



Specialist veterinary dental centres in countries like the United States now have all the equipment and know-how needed to handle operations ranging from simple cleaning to the treatment of large and small caries and even tooth extractions and reconstructions. For fifteen years now, Tecnomed has believed that if you are going to treat your pets for pathologies of the skin, heart or liver, it is only right to deal with those of oral cavity too, especially since teeth can have a major influence on your pet's wellbeing. Tecnomed has been a protagonist in veterinary dentistry for many years, and offers a complete range of products designed to satisfy the needs of a growing number of clients who want their furry friends to receive the best possible veterinary care.

# Electrified veterinary dental units



Prophy 700

Prophy 700 dental cart has all the tools and features you need and is designed to ensure maximum operational efficiency. The Prophy 700 dental trolley is elegantly and ergonomically designed and permits total freedom of movement. The hanging cord instrument table can be customised to hold up to five electric or air driven instruments of your choice. Extremely lightweight and easy to move, thanks to the comfortable antistatic wheels and the plexiglass pedal shelf (optional), the Prophy 700 promotes better coordinated interactions between dentist and assistant. The spray water supply from the tank guarantees total operating autonomy; there is also an independent spray adjustment for each instrument.



An ABS instrument tray is also available for mounting over the equipment table of the Prophyl 700. The tray is 375x275mm in size.  
Product code DE2.00M



All the main functions are within easy reach of your foot thanks to the semi-progressive foot control provided. The foot unit incorporates controls for instrument air drive and spray, micromotor reversal and endodontic scaler.

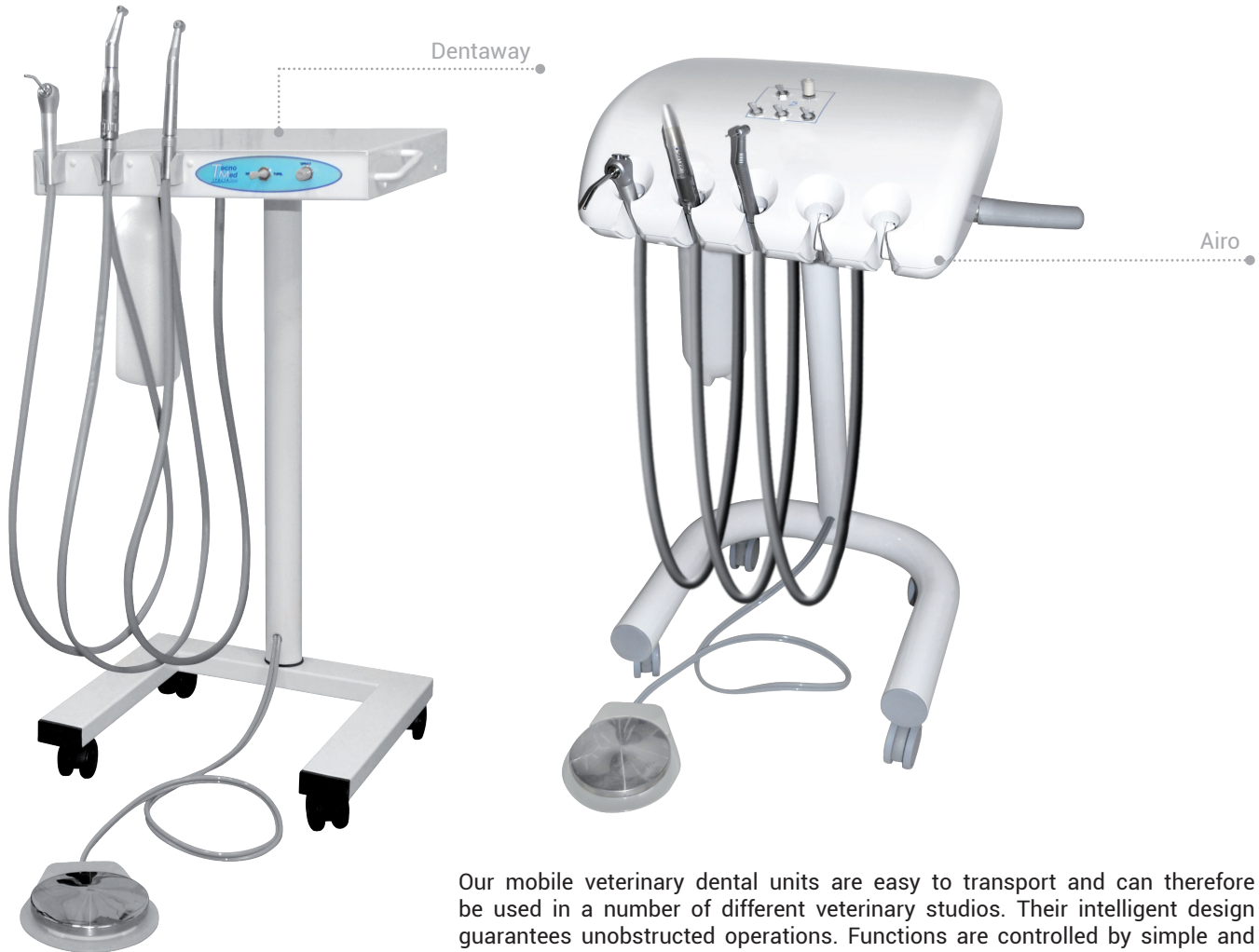


As an optional, the semi-progressive foot control that comes as standard equipment can be replaced by a Feed Fec foot control. The Feed Fec progressive control pedal activates all instruments functions. Spray actuation can always be on by pressing the central button and activating the progressive lever. It can also be activated, if necessary, by pressing the lower lever only. It also features a button for reverse movement of the micromotor. The pedal can be stored on the plexiglass pedal holder (optional).

## Data sheet and equipment list

		Prophyl 700 Product code DE700E	
Air supply		6/8 bar	
Power supply		24/220V-50 Hz	
Dimensions		500x500x900 mm	
Weight		15 Kg	
Luzzani® Minimate steel syringe		●	
High speed handpiece/pneumatic micromotor cord		● 3	
Electric micromotor kit with optic fibre		Optional	
Ems® comp. piezoelectric scaler, 5th instrument		Optional	
Satelec® comp. piezoelectric scaler, 5th instrument		Optional	
	LED piezoelectric scaler, 5th instrument		Optional
	LED curing light		Optional
	Semi-progressive foot control		●
	Feed Fec progressive foot control		Optional
	1lt spray water tank		●
	Mains/bottle water switching kit		Optional
	Plexiglass pedal holder		Optional
	Magnetic tray table		Optional
	Garanzia Warranty		24 months

# Pneumatic veterinary dental units



Our mobile veterinary dental units are easy to transport and can therefore be used in a number of different veterinary studios. Their intelligent design guarantees unobstructed operations. Functions are controlled by simple and intuitive hand and foot controls. These units offer all the functions you need to provide effective veterinary dental treatments. They are made from top quality materials for unrivalled robustness. The spray/water supply from the tank guarantees total operational autonomy. All you need to be up and running is a compressor connection.



The front panel houses the water/spray regulator and a selector for the left or right hand instrument. In the lower part there is the water/spray lever selector.



The Airo control panel includes: in the upper part the lever selector for dispensing water spray with the relative adjustment tap; in the lower part the 3 lever selectors for choosing the instruments (for example: pneumatic micromotor with contra-angle, high speed handpiece and pneumatic scaler).



These trolley units come with a progressive foot control. An increase in foot pressure gives an increase in instrument speed.

## Comparative data sheet and equipment list

	Dentaway Product code UV3PN	Airo Product code DE700EP
Alimentazione elettrica	/	/
Air supply	5-8 bar	5-8 bar
Dimensions (w x h x l)	400 x 800 x 350 mm	500x900x500 mm
Weight	10 Kg	15 Kg
DCI style syringe	●	●
High speed handpiece/pneumatic micromotor cord	●2	●2
Pneumatic scaler cord	/	Optional
Disc type progressive foot control	●	●
1lt spray water tank	●	●
Instrument tablet	Metal	Abs
Warranty	24 months	24 months



# Mobile veterinary dental units



Minimum size, maximum efficiency! These mobile veterinary dental units permit unobstructed operations.

The power supply of the spray water tank, the vacuum suction system and the silent-running, built-in compressor make them fully independent and let you transport and position them anywhere you want. Functions are controlled by simple and intuitive hand and foot controls. These units offer all the functions you need to provide effective veterinary dental treatments. They are robustly made from top quality materials and feature intelligent and stylish designs.





The front panel houses the water/spray regulator and the instrument selectors. The bacteriological suction filter is positioned on the back of the trolley.



With its rolling luggage design, Dentacase makes you feel as if you are going on holiday!

## Comparative data sheet and equipment list

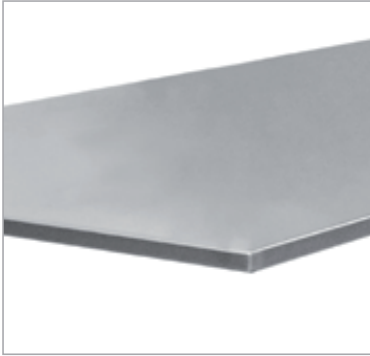
	Dentacase Product code UV4VA
Power supply	220/240 V - 50/60 Hz
Dimensions	600 x 410 x 290 mm
Weight	30 kg
DCI style syringe	●
High speed handpiece/pneumatic micromotor cord	● 2
Foot control	Disc type, progressive
1lt spray water tank	●
Suction system	Vacuum
Bacteriological suction filter	●
Built-in oil-free compressor	●
Tank capacity	6 litres
Noise level	50 dB(A)
Warranty	24 months

# Examination & surgical tables



All of the veterinary examination tables are constructed from durable 304 grade stainless steel and are exceptionally easy to sanitise, making them ideal for sterile environments. Mobile tables feature swivel castors for easy manoeuvrability.

This selection of tables is designed to meet every veterinarians need and requirements for their practice.



40mm thick worktop, made with 1.5mm thick sheet metal and reinforced with stainless steel reinforcements.



Structure set back on all four sides to be able to go against the wall even in case of coving.



Dimensions available both on feet and on wheels in different sizes. Produced by an Italian company certified ISO 9001 and 14001.

## Comparative data sheet

	Fixed table product code	Mobile table product code
Fixed table legs	●	/
Wheels	/	●
Size 1 1200x600x900 mm (lpxh)	TA01200X	TA01200XR
Size 2 1500x600x900 mm (lpxh)	TA01500X	TA01500XR
Size 3 1800x600x900 mm (lpxh)	TA01800X	TA01800XR

# Equipment

## Electric micromotor

Compactness, reliability, silence and versatility are just some of the features offered by this micromotor. The rotation enables these devices to reach high speeds with minimal noise, vibration and heat dissipation. In combination with the contra-angle or the straight handpiece with e-type attachment, it will fully satisfy your needs.



### Standard equipment:

- Control unit
- E-type coupling micromotor handpiece
- Handpiece base
- Foot control

Product code	MM15VET-N
Micromotor handpiece	MX922E
Rotation speed	35,000 rpm
Control type	Benchtop
Reverse	●
Power	100 W
Torque	3.5 Ncm
Speed indicator	Analogue
Overload protection	●
Power supply	220/240V-50/60Hz
Weight of micromotor	180 g
Dimensions of micromotor (ØxL mm)	24 x 111
Control unit weight	1.5 kg
Control unit dimensions (w×l×h)	115 x 153 x 77 mm
Warranty	12 months

## Pneumatic micromotors



Ivory pneumatic micromotor. 4-way coupling. Internal spray. Maximum speed 25.000 rpm. Intramatic coupling. Rotation reversal ring.  
**Product Code M714C**



Ivory pneumatic micromotor. 6-way coupling with led light. Internal spray. Maximum speed 25.000 rpm. Intramatic coupling. Rotation reversal ring.  
**Product Code M714L**



VetLine pneumatic micromotor. 4-way coupling. External spray. Maximum speed 20.000 rpm. E-Type coupling. Rotation reversal ring.  
**Product Code HCP74MW**

## High speed handpieces



VetLine high speed handpiece. Standard head. 3-nozzle spray system. 4-way coupling. Maximum speed 380.000 rpm. Without optic fibre. Push button. Ceramic bearings.  
**Product Code S504M**



VetLine high speed handpiece. Standard head. 1-nozzle spray system. 4-way coupling. Maximum speed 380,000 rpm. Without optic fibre. Key clamping mechanism. Steel bearings.  
**Product Code HCP118**

## Contra-angles



Ivory contra-angle. No light. Ratio 1:1. Internal spray.  
Maximum speed 40.000rpm. Push button.  
Intramatic coupling.  
**Product Code SL411E**



Ivory contra-angle. Optic fiber. Ratio 1:1. Internal spray.  
Maximum speed 40.000rpm. Push button.  
Intramatic coupling.  
**Product Code SL411L**



VetLine contra-angle. No light. Ratio 1:1. External spray  
system with clip, product code ADP178. Maximum speed  
20.000rpm. Lever clamping mechanism. E-type coupling.  
**Product Code ANR171-O**

## Straight handpieces



Ivory straight handpiece. No light. Ratio 1:1. Internal spray.  
Maximum speed 40.000rpm. Push button.  
Intramatic coupling.  
**Product Code SL211E**



Ivory straight handpiece. Optic fiber. Ratio 1:1. Internal  
spray. Maximum speed 40.000rpm. Push button.  
Intramatic coupling.  
**Product Code SL211L**



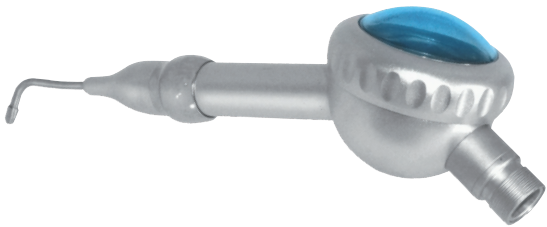
VetLine straight handpiece. No light. Ratio 1:1. External  
spray system with clip, product code ADP179. Maximum  
speed 20.000rpm. Ring type clamping mechanism.  
ISO-Standard/ E-type coupling.  
**Product Code ANR177-O**

## Scalers



VetLine scaler. No light. 4-way coupling.  
Ultrasonic frequency (Hz) 5800~8000 ± 5%.  
3 Kavo (Sonicflex) compatible tips supplied.  
**Product Code HCP234**

## Whitening instruments

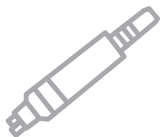


VetLine whitening. 4-way coupling.  
Air supply 2,8 bar.  
Water supply 1-2 bar.  
Spare O-ring kit.  
**Product Code PL600H**

## Burs for rotary instruments



Rotary instrumentation burs.  
4 high speed handpiece burs.  
11 low speed handpiece burs.  
**Product Code SET80**



**Instruments & accessories**





# Create your ideal veterinary practice



**Cabinets & functional carts**



**Lighting systems**



**Sterilization center**



**Communication & diagnostics**



**Disinfection systems**





